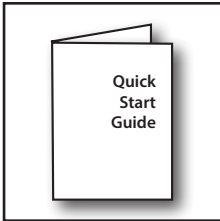


Quick Start Guide Mode-S Beast

Art. 41000

Art. 41080





Box Contains (Art. 41000 + 41080):

- Mode-S Beast PCB
incl. SMA/ USB connectors
- LEDs (7 pcs.)
- Aluminium case
- USB cable (cable length 1.8 m)
- Quick Start Guide

You may order a separate assembly service for the Beast Kit in our web-shop www.jetvision.de.

Kit Assembly

Visit http://wiki.modesbeast.com/Mode-S_Beast:Kit_Assembly.

Driver Download

1. Visit <http://www.ftdichip.com/Drivers/VCP.htm> and download the FTDI driver according to your operating system. We recommend using the self installing executable that can be found in the last column.
2. Install the driver by double clicking on the executable file in the folder you did store the download or install the driver according to your OS installation procedure.

Connections

1. Connect the Mode-S antenna with the antenna cable to the Mode-S Beast, place the antenna as free and as high as possible. **Make sure that the antenna has a conductive connection to ground to avoid damage of Mode-S Beast or computer!**
2. Connect the USB cable to the Mode-S Beast and your computer.

To receive aircraft, you need:

- Antenna for 1090 MHz,
e.g. our „A3 ADS-B“ Antenna
- Antenna cable

Visit our web-shop:
www.jetvision.de

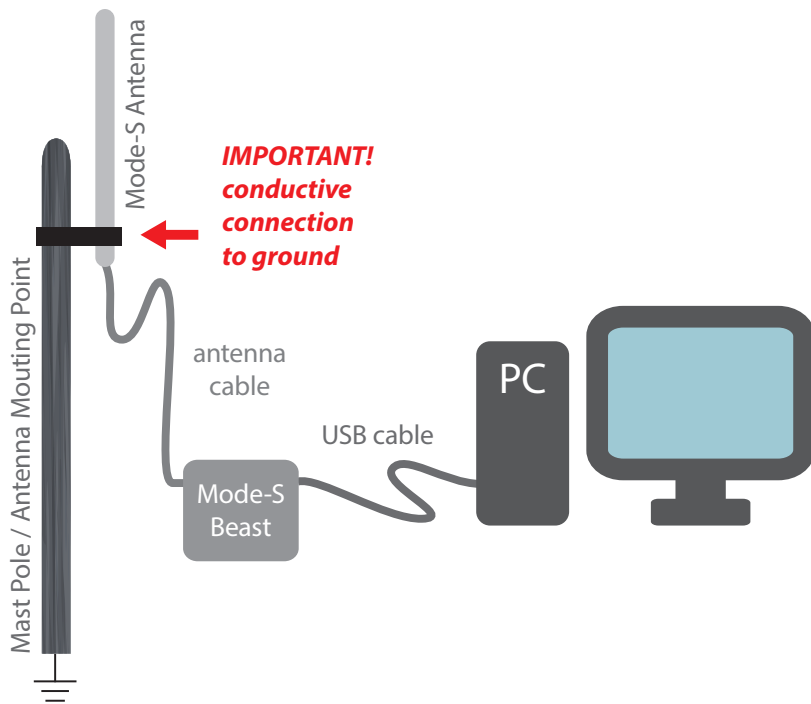


Hardware Installation

Caution:








Static electricity around the antenna can damage your Mode-S Beast or computer if there is no ground connection!

Do **NOT** mount the antenna on isolated ground, e.g. wooden stick or plastic or without any connection to ground!



LED Description

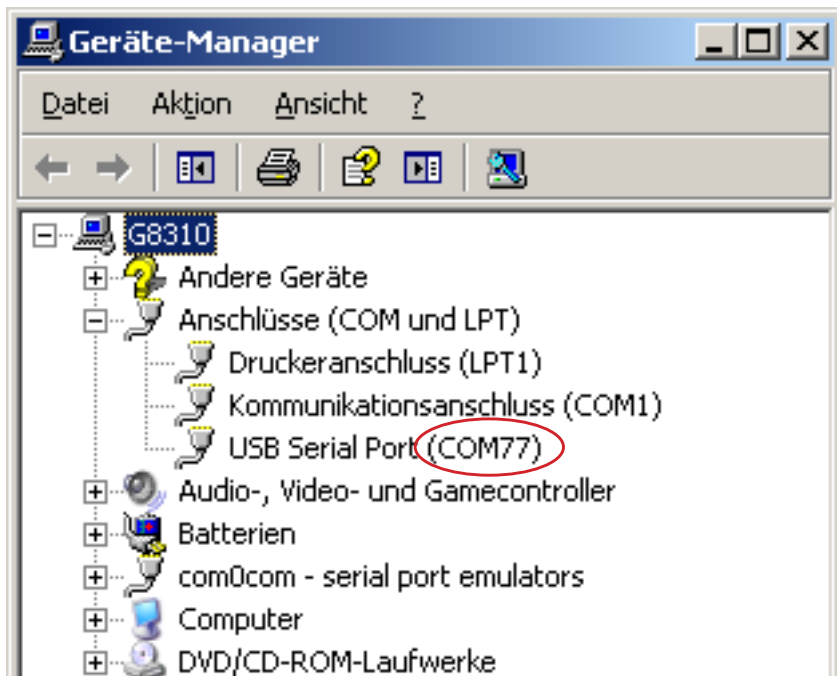
There is a heartbeat implemented with the LEDs:
All LEDs flash for a short moment about every 1 second if there is no antenna connected. This is to inform that the unit is anyway active and working, waiting for a signal.

						
Mode-S datagram				PC data transfer stalled	data transfer to PC	power on
DF-0 DF-4 DF-5	DF-11	DF-17 DF-18	DF-20 DF-21			

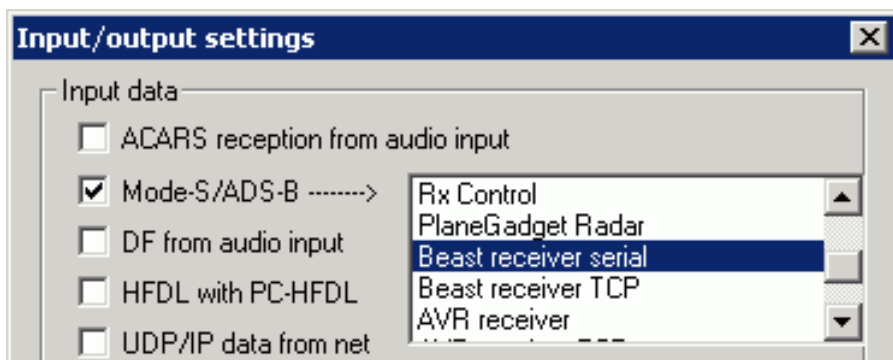


Startup

1. To find out to which COM port the Mode-S Beast is connected, open the device manager:
[Start -> Run command](#)
type %windir%\System32\RunDLL32.EXE devmgr.dll DeviceManager_Execute
press enter
2. Open the **[+]** tab for COM and LPT you will see a „USB serial port“ appearing and disappearing each time that you disconnect and reconnect the Mode-S Beast. Remember this COM port.



3. Download PlanePlotter here:
<http://www.coaa.co.uk/planeplotter.htm>
4. Install PlanePlotter by double clicking on the executable file in the folder you did store the download.
5. Follow the instructions of the installation dialogue.
6. Setup Input/Output Settings:
Options -> IO-Settings -> Input data -> „Mode-S/ADS-B“ -> „Beast receiver serial“ -> OK



Note:

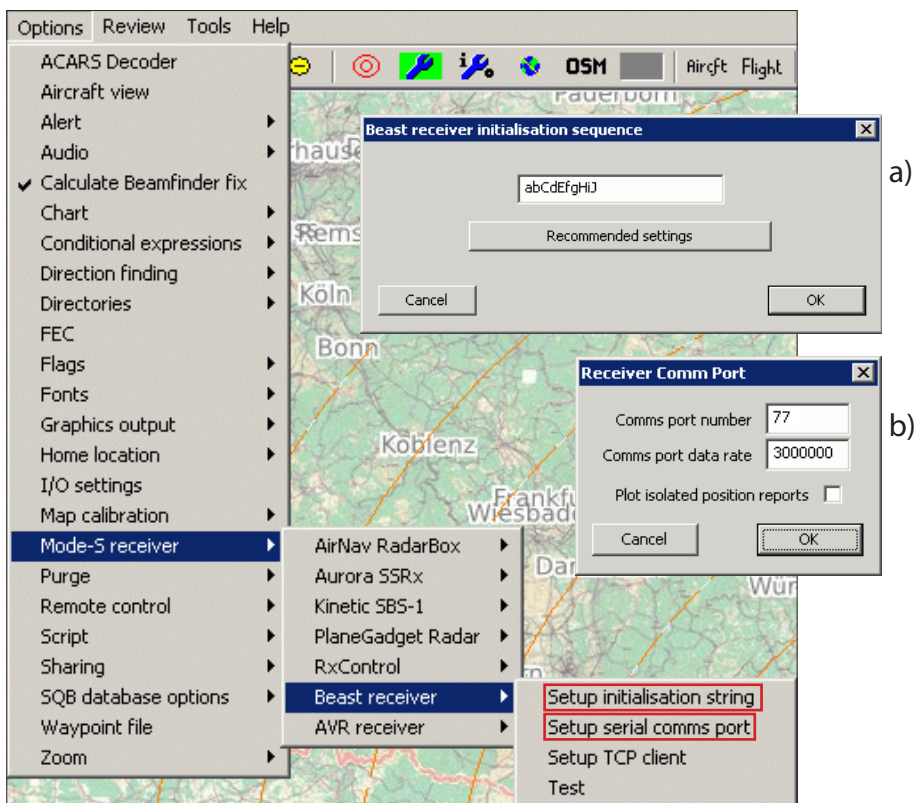
The Mode-S Beast is also supported by a variety of other software for aircraft plotting, see their installation instructions how to install the Mode-S Beast together with them.

7. Setup COM Port & Serial Initialisation String:

Options -> Mode-S receiver -> Beast receiver -> Setup serial

comms port -> a) Serial initialisation string -> abCdEfgHiJ -> OK

-> b) Comms port number (your COM port), Comms port data rate (3000000) -> OK



Visit our **Wiki** for more details about the Mode-S Beast system software:
http://wiki.modesbeast.com/Mode-S_Beast:Contents

Distribution

Günter Köllner Embedded Development GmbH
85256 Vierkirchen, Germany