

Quick Start Guide

Radarcape

Art. 66006

Art. 66066

Art. 66077




jetvision



Box Contains (Art. 66006):

- Radarcape
- Wall plug power supply
- 5 m network cable
- GPS antenna (cable length 5 m)
- Quick Start Guide



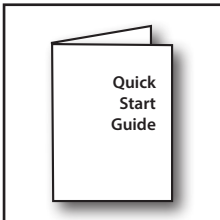
Optional Accessory (Art. 66066):

- „A3 ADS-B“ Antenna
- Antenna cable (cable length 10 m)
- Antenna mount



Optional Accessory (Art. 66077):

- „Active Diapason“ Antenna
- Antenna cable (cable length 20 m)
- Antenna mount
- Bias Tee
- USB power supply cable



Requirements:

- AC power supply 110 V or 230 V
- Internet router providing DHCP and DNS

Visit our Wiki for further information:

http://wiki.modesbeast.com/Radarcape:Installation_Guide

Connections

1. Connect the Mode-S antenna with the antenna cable to the Radarcape, place the antenna as free and as high as possible. **Make sure that the antenna has a conductive connection to ground to avoid damage of Radarcape or Internet router!**
2. Connect the GPS antenna to the Radarcape. Place the GPS antenna to a location with at least half of sky view, e.g. a window sill.
3. Connect the network cable to your Internet router and the Radarcape.
4. Connect the power supply to the Radarcape and your power outlet.

To receive aircraft, you need:

- Antenna (1090 MHz bandwidth)
- Antenna cable

Visit our web-shop:
www.jetvision.de

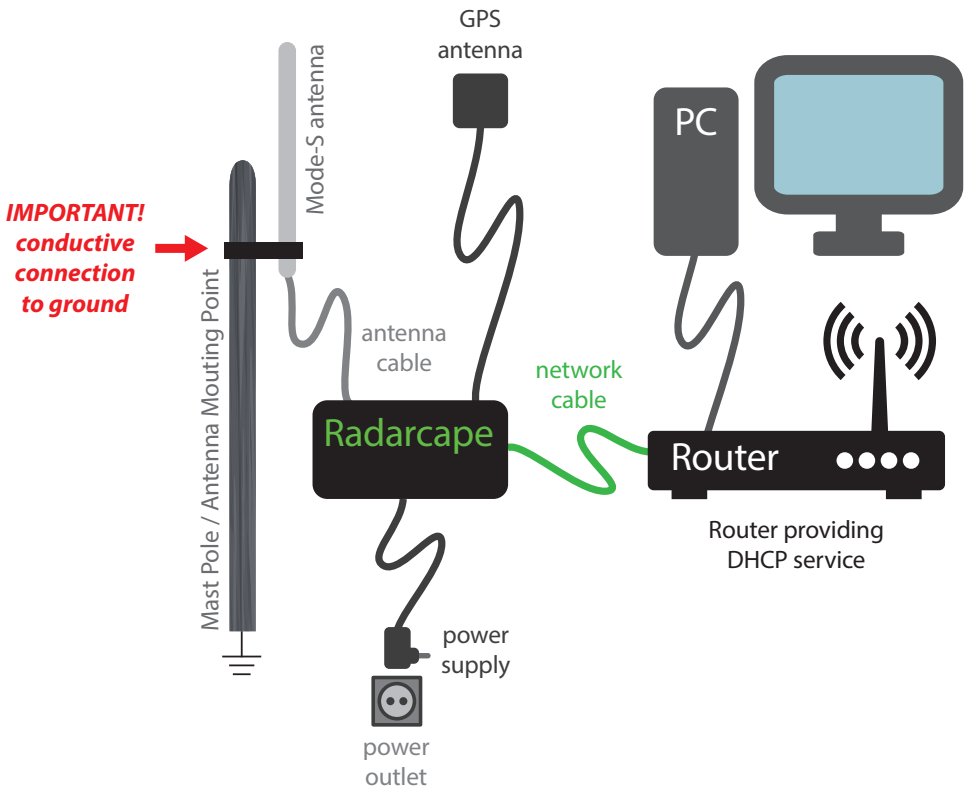


Hardware Installation

Caution:

Static electricity around the antenna can damage your Radarcape or Internet router if there is no ground connection!

Do **NOT** mount the antenna on isolated ground, e.g. wooden stick or plastic or without any connection to ground!



LED Description

Power LED

The power LED is green when power is applied to the device.

Mode-S LED

The Mode-S LED is flashing on each data frame that has been received from aircraft.

If no frames are received (e.g. no antenna connected), it flashes once per second in order to indicate working state.

GPS LED

The GPS LED is flashing green once each second exactly when the second changes.



Startup

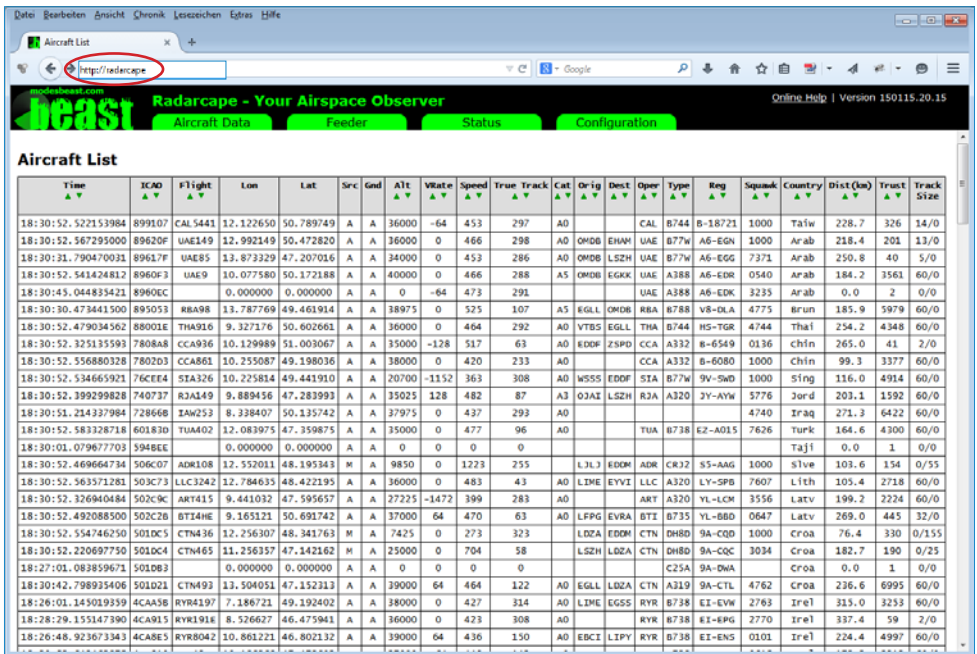
1. Wait a few minutes to make sure the network is connected.
2. Open an Internet browser on your PC.

We recommend to use always the latest version of one of the following Internet browsers:

- Internet Explorer
- Firefox
- Chrome
- Safari

3. Enter <http://radarcape> to open the **Radarcape user interface**.

In rare cases, <http://radarcape.local> must be used as some router models use a non-standard configuration.



Time	ICAO	Flight	Lon	Lat	Src	Gnd	Alt	VRate	Speed	True Track	Cat	Orig	Dest	Oper	Type	Rng	Squawk	Country	Dist(km)	Track Size
18:30:52.522153984	899107	CAL 5441	12.122650	50.789749	A	A	36000	-64	453	297	AD			CAL	B744	8-18721	1000	Taiw	228.7	326 14/0
18:30:52.567295000	89620F	UAE149	12.992149	50.472820	A	A	36000	0	466	298	AD	OMDB	ENH4	UAE	B77W	A6-EGN	1000	Arab	218.4	201 13/0
18:30:52.541424812	8960F3	UAE85	13.873329	47.207016	A	A	34000	0	453	286	AD	OMDB	LSZH	UAE	B77W	A6-EGG	7371	Arab	250.8	40 5/0
18:30:52.541424812	8960F3	UAE9	10.077580	50.172188	A	A	40000	0	466	288	AS	OMDB	EGKK	UAE	A388	A6-EDR	0540	Arab	184.2	3561 60/0
18:30:45.044833421	8960EC		0.000000	0.000000	A	A	0	-64	473	291				UAE	A388	A6-EDK	3235	Arab	0.0	2 0/0
18:30:30.473441500	895053	RBA98	13.787769	49.461914	A	A	38975	0	525	107	A5	EGLL	OMDB	RBA	B788	V8-DLA	4775	Brun	185.9	5979 60/0
18:30:52.479034562	88001E	THA916	9.327176	50.602661	A	A	36000	0	464	292	AD	VTBS	EGLL	THA	B744	HS-TGR	4744	Thai	254.2	4348 60/0
18:30:52.325135593	7808A8	CCA936	10.129989	51.003067	A	A	35000	-128	517	63	AD	EDDF	ZSPD	CCA	A332	8-6549	0136	Chfn	265.0	41 2/0
18:30:52.556880328	7802D3	CCA861	10.255087	49.198036	A	A	38000	0	420	233	AD			CCA	A332	8-6080	1000	Chfn	99.3	3377 60/0
18:30:52.534665921	740CFE4	3IA326	10.225814	49.441910	A	A	20700	-1152	363	308	AD	WSSS	EDDF	STA	B77W	9V-SWD	1000	Sing	116.0	4914 60/0
18:30:52.399299828	74073F	RJA349	9.889456	47.281993	A	A	35025	128	482	87	A3	OJAE	LSZH	RJA	A320	2V-AW	5776	Jerd	203.1	1592 60/0
18:30:51.224237984	728668	IAM253	8.238407	50.135742	A	A	37975	0	427	293	AD						4740	Iraq	271.2	6422 60/0
18:30:52.583228718	60183D	TUAD02	12.083075	47.359875	A	A	35000	0	477	96	AD			TUA	B738	E2-A015	7626	Turk	164.6	4300 60/0
18:30:01.079677703	5948EE		0.000000	0.000000	A	A	0	0	0	0								Tajf	0.0	1 0/0
18:30:52.469666734	506G07	ADR108	12.552011	48.195343	M	A	9850	0	1223	255		L3LJ	EDDM	ADR	CRJ2	S5-AAG	1000	Silve	103.6	154 0/55
18:30:52.563571281	503C73	LLC3242	12.784635	48.422195	A	A	36000	0	483	43	AD	LME	EYVJ	LLC	A320	LY-SPB	7607	Lith	105.4	2718 60/0
18:30:52.326940484	502C9C	ART415	9.441032	47.595657	A	A	27225	-1472	399	283	AD			ART	A320	YL-LCH	3556	Latv	199.2	2224 60/0
18:30:52.492088500	502C26	BTI44E	9.165121	50.691742	A	A	37000	64	470	63	AD	LFPG	EVRA	BTI	B735	YL-BBD	0647	Latv	269.0	445 32/0
18:30:52.554746250	501DC5	CTN436	12.256307	48.341763	M	A	7425	0	273	323		LDZA	EDDM	CTN	DHBD	9A-CCD	1000	Croa	76.4	330 0/155
18:30:52.220697750	5010C4	CTN465	11.256357	47.142162	M	A	25000	0	704	58		LSZH	LDZA	CTN	DHBD	9A-CCO	3034	Croa	182.7	190 0/25
18:27:01.083859671	5010B3		0.000000	0.000000	A	A	0	0	0	0					C25A	9A-DWA		Croa	0.0	1 0/0
18:30:42.798935406	501021	CTN493	13.504051	47.152313	A	A	39000	64	464	122	AD	EGLL	LDZA	CTN	A319	9A-CTL	4762	Croa	236.6	6995 60/0
18:26:01.145019359	4C4A58	RYR4197	7.186721	49.192402	A	A	38000	0	427	314	AD	LME	EGSS	RYR	B738	EI-EVW	2763	Irel	315.0	3253 60/0
18:28:29.155147390	4C4915	RYR1918	8.526627	46.475941	A	A	36000	0	423	308	AD			RYR	B738	EI-EPG	2770	Irel	337.4	59 2/0
18:26:48.923673343	4C48E5	RYR8042	10.861221	46.802132	A	A	39000	64	436	150	AD	EBCT	LIPY	RYR	B738	EI-ENS	0101	Irel	224.4	4997 60/0

- Go to **Configuration > Software Maintenance** to **update** the flight routes database and the basestation database.

Radarcape - Your Airspace Observer | Online Help | Version 150115.20.15

Configuration Settings

Aircraft List

Time	ICAO	Flight	Lon	Lat	Src	Gnd	Alt	VRate	Speed	True Track	Mode	Reg	Squawk	Country	Dist (km)	Trust	Track Size				
18:54:12.062639906	A4F6A5	ET0901	11.158351	49.105209	A	A	28900	-1984	410	304	A0	OWAA	EDFH	GTI	B744	N419NC	1000	USA	42.3	3293	60/0
18:54:12.505680171	89617F	UAE85	9.631136	47.642494	A	A	17425	-1088	279	236	A0	OMDB	LSZH	UAE	B77W	A6-EGG	1000	Arab	185.2	3884	60/0
18:54:12.499259859	8960F8	UAE75	11.912701	48.945328	A	A	40000	64	465	289	A5	OMDB	LFPG	UAE	A388	A6-EDW	1000	Arab	38.1	2455	60/0
18:54:12.630161234	8960EC	UAE3	11.120188	50.086716	A	A	38000	-192	463	290	A5	OMDB	EGLL	UAE	A388	A6-EDK	3235	Arab	147.4	2305	60/0
18:49:59.682992437	7802D3	CCA861	8.320015	47.833740	A	A	29000	-960	358	223	A0		CCA	A332	B-6080	1000	Chin	254.8	5337	60/0	
18:53:37.928819156	740737	RJA149	12.354813	47.291061	A	A	35000	0	467	102	A3	OJAE	LSZH	RJA	A320	2Y-AYW	5776	Jor'd	178.5	4131	60/0
18:54:12.507495187	7100LA	SV9A18	10.673868	48.673298	A	A	35000	0	477	132	A5	EBBR	OEJN	SWA	B748	HZ-A13	2101	Saud	58.7	2864	60/0
18:54:12.520103000	600854	AHY007	12.012212	49.095016	A	A	35975	-64	415	294	A0	UBBB	EGLL	AHY	A320	4K-AZ84	4743	Azer	53.7	2035	60/0
18:51:53.065871984	5081AO		0.000000	0.000000	A	A	0	-64	410	247		WAW	A370	UR-WIA				Ukra	0.0	2	0/0

Radarcape - Your Airspace Observer | Online Help | Version 150219.18.30

Configuration

Software Maintenance

Update flight routes database (zip file link, not short link)
 Get the latest link from [the PP Routes Yahoo Forum](#).

Update basestation database (zip file link, not short link)
 Get the latest link from [Nantima pages](#).
http://pp-sqb.nantima.co.uk/basestation_latestzip

Upgrade Radarcape Software
 Default is latest available version
 radarcape-150219.18.30

The basestation database contains the **registration** and the **type** of an aircraft.

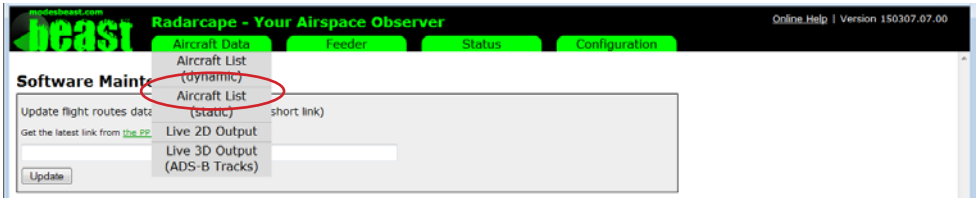
The flight routes database contains the **origin** and the **destination** of a flight.

It is necessary to update these databases because otherwise this information will not be shown on the **Aircraft Data** pages.

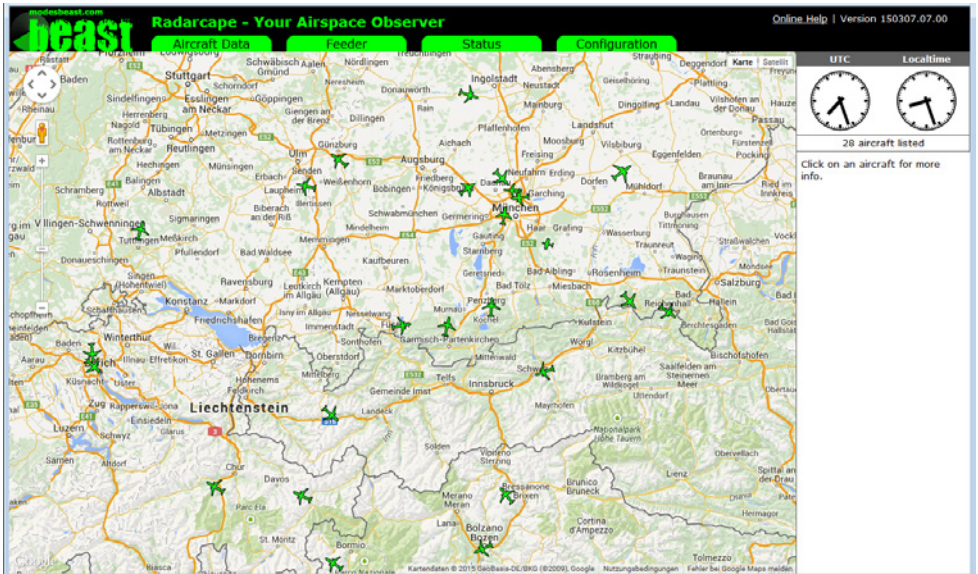
As we try to improve the Radarcape software continuously, the **latest software version** can be found here:

http://wiki.modesbeast.com/Radarcape:Installation_Guide

5. Go to **Aircraft Data > Live 2D Output** to see the received aircraft on a 2D map.



6. Enjoy your Radarcape!



Visit our **Wiki** for more details about the Radarcape system software:
<http://wiki.modesbeast.com/Radarcape:Contents>

Distribution

Günter Köllner Embedded Development GmbH
85256 Vierkirchen, Germany